

# 三久參考型米麥水份計攜帶式

SUNCUE PADDY WHEAT MOISTURE REFERENCE METER Portable



**TD-6** 測定對象：稻穀、糙米、白米、大麥、小麥、裸麥  
 Application: paddy, brown rice, polished rice, barley, wheat, rye.

## 特點

- **清楚易懂**  
大型液晶顯示，清楚易懂。
- **操作簡單**  
操作按鈕少，可防止錯誤發生。
- **自動水分換算機能**  
只要按穀物選擇按鈕，各種穀物的水份，均可自動換算。
- **平均值計算機能**  
只要按平均值按鈕，就可計算2~9次的平均值。
- **溫度補正機能**  
採用特殊電子迴路自動溫度補正裝置。
- **自動斷電機能**  
經過一分鐘以上沒有操作時，電源會自動切斷。

## FEATURES

- **Clear and easy to understand**  
Large, easy-to-read LCD display.
- **Simple operation**  
Simple button design to prevent errors.
- **Mode conversion**  
Press "select" button to convert measurement to various grain.
- **Average calculation**  
Press "average" button to get average moisture content from 2 to 9 entries.
- **Temperature compensation**  
Unique electronic circuit can do temperature compensation automatically.
- **Power off automatically**  
After one minute without operating, power will shut off automatically.

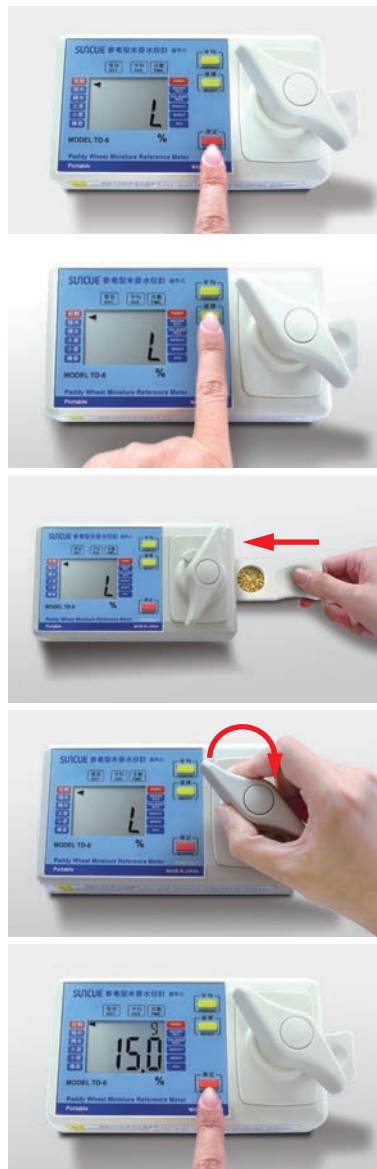
# 三久參考型米麥水份計-機能豐富、操作簡單、防止過度乾燥

SUNCUE Paddy Wheat Moisture Reference Meter - Multiple functions, simple operation, prevents overdrying.

## ● 附攜帶型收納盒 Portable case



## ● 操作簡單的TD-6 Simple operation



- ① 按壓**測定**鈕  
電源開關  
Press **MEASURE** key  
power switch
- ② 按壓**選擇**鈕▶選擇穀物  
Press **SELECT** key  
▶ to select grains
- ③ 試料盤插入測定部  
Insert the sample tray  
into measuring part
- ④ 旋轉測定把手  
Rotate the handle
- ⑤ 按壓**測定**鈕·顯示水份值  
Press **MEASURE** key  
to display the result

項目Item	機型Model	TD-6規格 SPECIFICATIONS					
測定對象及範圍 Application & Measuring range		稻穀 Paddy	8.7~40.0%	糙米 Brown rice	9.1~40.0%	白米 Polished rice	9.8~20.0%
		大麥 Barley	8.0~34.3%	小麥 Wheat	8.6~35.0%	裸麥 Rye	8.4~34.7%
測量結果為參考值·超出測定區間範圍外者不具參考價值 The measured value is for reference. Grains with moisture content out of the measuring range is not applicable.							
顯示解析度 Resolution		0.1% 但是30%以上以1%為量測單位 moisture content above 30% will be rounded off to the nearest integer					
使用溫度範圍 Operating temp. range		5~40°C 結露除外 exception for dewing					
顯示方式 Display		大型液晶數字顯示 LCD digital display					
電源 Power		3號乾電池, 1.5V*4只 four No.3*AA*batteries 1.5V					
本體尺寸 Dimensions		長172×寬100×高75 mm L172×W100×H75 mm					
重量 Weight		約500g about 500g					

- 測定注意事項：本水份計是以日本水稻為標準，及採用日本檢量線，會因地區性、大氣溫度、相對濕度、穀物品種之不同，所測得之水份會有誤差。所以請依當地的國家標準，例如絕乾法：5g粉碎的穀物，放入105°C的恆溫箱，烘乾5小時的作業方法，或配合當地糧管單位的水份計和本水份計做出對照表，再施行測定作業，顯示出的水份值再看對照表的實際水份值，即本水份計的穀物含水率是參考值。
- 圖示及規格僅供參考，實際產品規格以客戶簽署訂單及出貨實物為主。
- Notice for Paddy Wheat Moisture Reference Meter: Since the design of TD-6 follows the calibration curve of paddy in Japan, the user may obtain different moisture test results because of variables in region, ambient temperature, relative humidity and grain varieties. Please make calibration according to your national standard, such as oven-dry method (drying 5g of ground grain in an oven at 105°C for 5 hours) or make a tabulation by comparing the moisture reading on TD-6 with the standard of local authority to obtain accurate result. Therefore, the moisture content registered on TD-6 is for reference only.
- The specification and graph is for reference only. Actual specification shall be based on the Sales Confirmation which customers sign and delivered products.

**SUNCUE**  
三久股份有限公司  
SUNCUE COMPANY LTD.

41348 台中市霧峰區民生路396號  
No.396, Minsheng Rd., Wufeng Dist., Taichung City 41348, Taiwan, R.O.C.  
Tel +886-4-2339-7171 Fax +886-4-2330-2939  
Website www.suncue.com  
E-mail sales@suncue.com



服務中心 Service Center